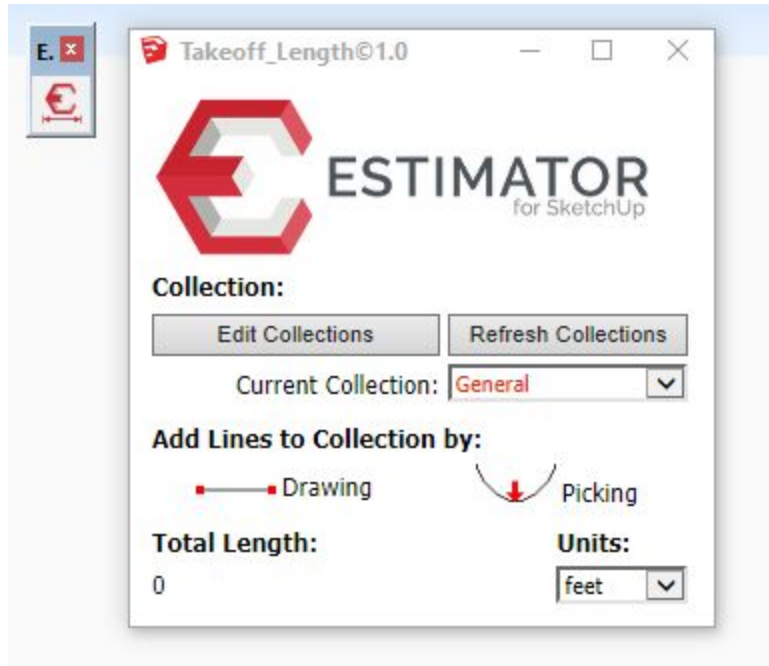


## Quick Start Guide



### Overview:

Takeoff Length is a SketchUp extension used to 'collect' lengths from SketchUp models useful for takeoff purposes and estimating.

Takeoff Length generates 'collections' of length data that can then be read by Estimator for SketchUp, or, used simply for manual entry into another estimating system.

### Using Takeoff Length:

#### Collections

The Collection area is where collections can be edited, by selecting 'Edit Collections', making changes to the collection information, and saving. This information is saved along with the current SketchUp model that is open, so you may have different collection files for different SketchUp models.

After editing collections, you may hit 'Refresh Collections' to display changes to the collections data.

The 'current collection' menu displays the currently selected collection in RED. You may change the current collection by selecting another collection using the dropdown menu.

### Add Lines to Collections

To add lengths to a collection for accumulating totals for that collection, you can either 'DRAW' or 'PICK'.

Select 'Drawing' to draw new lines that will become part of the current collection. Any existing lines in the collection will highlight in ORANGE.

Pressing the CTRL key (CMD for Mac) will release your current line and start a new line at a new point that you choose.

Select 'Picking' to select lines/curves that are already part of the model, making them now part of the current collection. Hovering over lines you will see lines highlighted in magenta and cyan available for selection. Once clicked and made part of the collection, they will be highlighted in ORANGE.

You can remove any lines as part of a collection just as you would normally delete lines, removing them from the collection.

To EXIT either of these tools at any time, press the SPACEBAR.

### Total Length and Units

Displays the Total Length of the currently selected Collection, updating as lines/curves are added into the Collection.

When a collection is changed using the dropdown menu under 'Collection', Total Length is updated to display the currently active collection.

Units are selected from the dropdown menu - defaults are 'feet', 'inches' and 'meters'. The current units are remembered with the saved model,